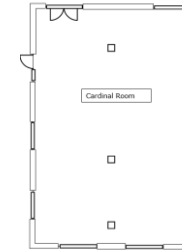
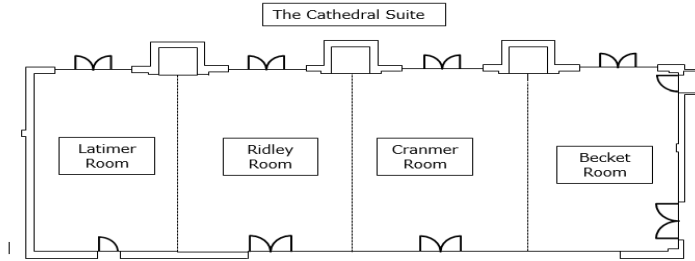


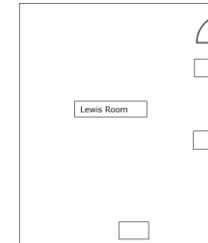
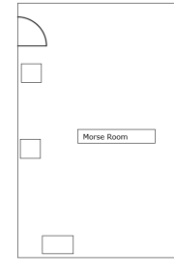
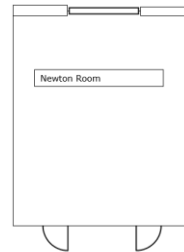
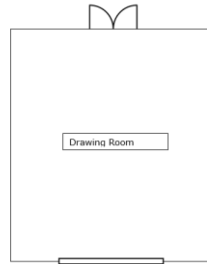
## Meeting Room Capacities

### Ground Floor



### 1st Floor

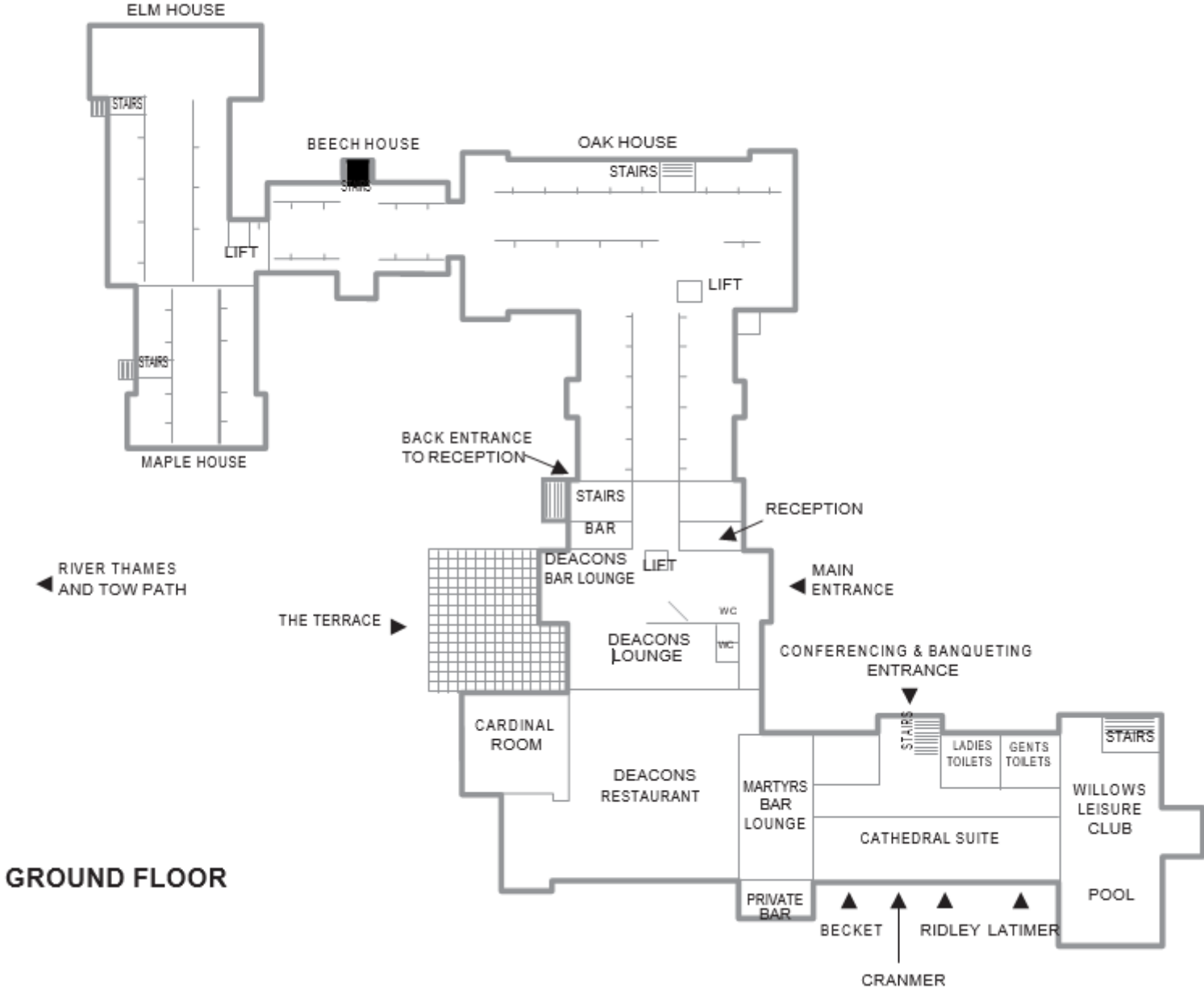
### 2nd Floor



Room Name	Dimensions L x W x H (m)	Floor Space (sq m)	Theatre	Classroom	Boardroom	U-Shape	Cabaret	Dining
<b>Cathedral Suite</b>	25 x 8.8 x 2.64	220	266	96	76	74	120	160
<b>Latimer/Ridley/Cranmer</b>	19.5 x 8.8 x 2.64	171	210	72	48	58	100	120
<b>Becket/Cranmer or Latimer/Ridley</b>	12.5 x 8.8 x 2.64	110	126	48	38	34	70	80
<b>Becket or Latimer</b>	5.5 x 8.8 x 2.64	48	40	24	24	20	32	40
<b>Cranmer or Ridley</b>	7 x 8.8 x 2.64	61	50	24	24	20	32	40
<b>Cardinal</b>	14.9 x 9.7 x 2.64	105	60	24	30	20	50	90
<b>Wolsey</b>	9.5 x 6 x 2.45	57	50	32	26	22	32	40
<b>Drawing Room</b>	8.7 x 7 x 2.4	61	40	24	24	20	32	40
<b>Morse or Lewis</b>	6.5 x 3.5 x 2.5	23	-	-	14	-	-	-
<b>Newton</b>	6 x 6.5 x 3	39	-	-	16	-	-	-

# VOCO® Oxford Spires

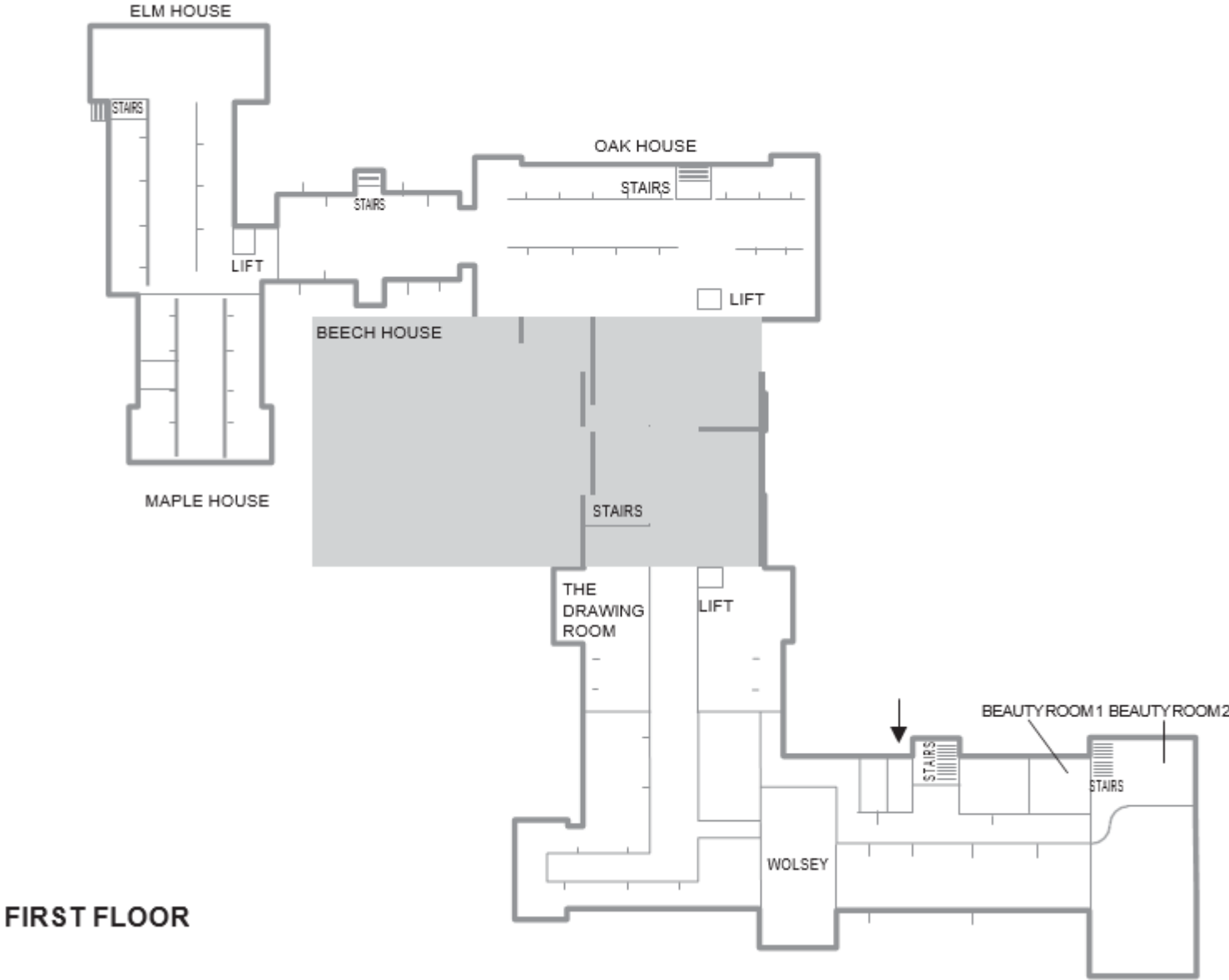
AN IHG® HOTEL



GROUND FLOOR

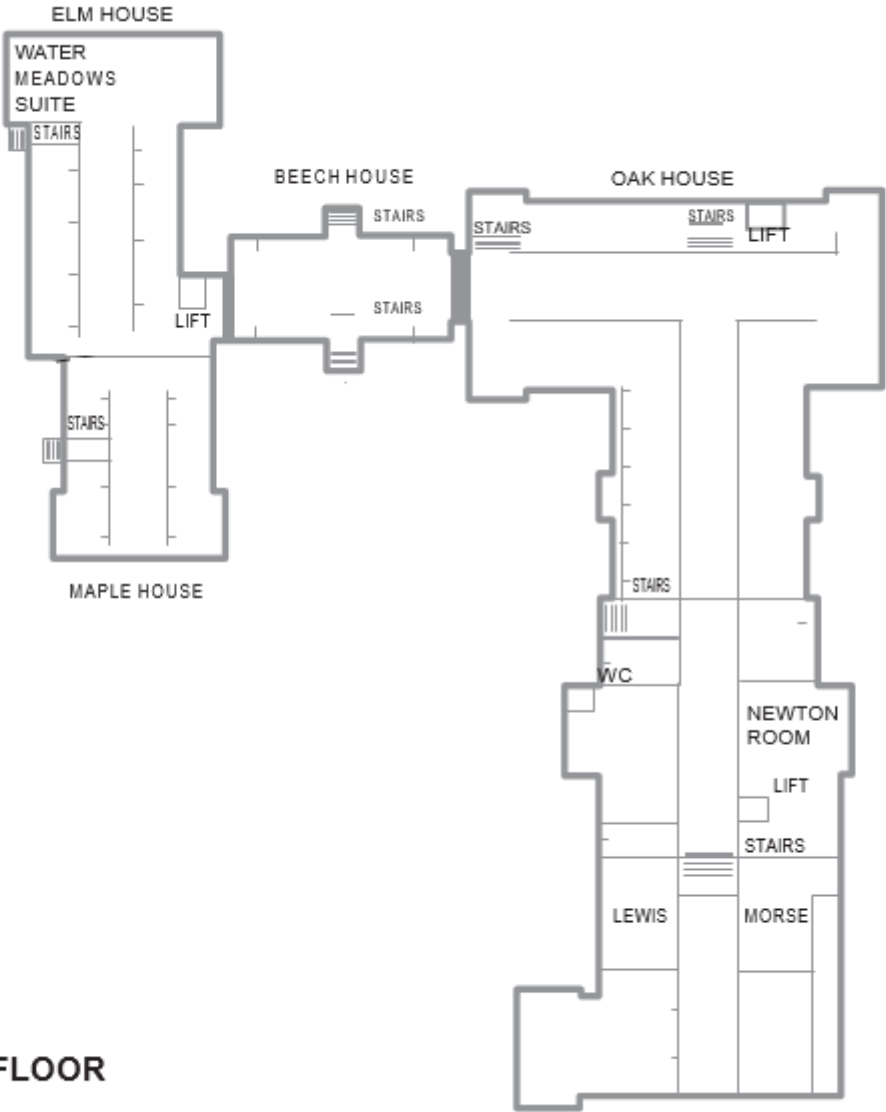
# VOCO<sup>®</sup> | Oxford Spires

AN IHG<sup>®</sup> HOTEL



# VOCO® Oxford Spires

AN IHG® HOTEL



**SECOND FLOOR**